

## Rehabilitation of a traditional house.

### *Traditional architecture to accommodate today's comfort.*

#### Type of intervention

Restoration  Rehabilitation / Renovation

#### Concerned elements on the intervention project

- 1. Foundations and underground structures
- 2. Vertical structures
- 3. Horizontal structures and vertical connections
- 4. Roof and terraces
- 5. Façade and building envelope
- 6. Finishes and completion elements
- 7. Integrate services
- 8. General strategies for building recovery

**Site** Askas, Nicosia district, Cyprus

**Objectives** Conservation- restoration & addition to a listed building in Askas village.

**Property** Private

**Designer** Architectural Workshop Agisilaou & Kalavas

**Date** 2011-2016



## Background to the intervention

The house – constructed in 1935 – was abandoned for years, in need of restoration and renovation work, in order to meet modern living requirements. The masonry was in relatively good condition.

## Description of the building

The spaces of the house are organized on two levels. Both levels, due to the topography of the building site, have direct access to the public street. All the spaces of the lower level were initially used as auxiliaries of the house, such as storage rooms, stables and traditional wine press room (linos). The main areas of the house were located on the upper level, having no direct connection with the auxiliary spaces of the lower level. The upper level part of the house consists of three rooms: two old stone buildings, which open directly to the street and a third more recent building made of solid bricks, at the rear NE border of the plot. The lower level part of the house consists of four independent rooms: three large dichora (a space almost square in plan, divided in two by a wooden post, centrally placed and a wooden beam) and a much smaller makrynari (a rectangular in shape space). All four spaces open to an inner courtyard.



Fig.1: The house from the SW (upper level) before the renovation works. © Agisilaou & Kalavas



Fig.2: The house from the SE before the renovation works. © Agisilaou & Kalavas



Fig.3: The single room of the upper level. © Agisilaou & Kalavas



Fig.4: The courtyard with the front door (lower level) before the renovation works. © Agisilaou & Kalavas



Fig.5-7: From left to right: The intermediate, transitional, outdoor space between two rooms on the upper level. The large space (dichoro) on the upper level. The single space (makrinari) on the upper level.

© Agisilaou & Kalavas

## The Diagnosis of the building (values and state)

The house was abandoned for years, in need of restoration and renovation work, in order to meet modern living requirements. The masonry was in relatively good condition but all the wooden structures (roofs, floors, windows etc) were in poor state of preservation.

## Rehabilitation works

The house was restored and conserved with the use of traditional material and techniques. A new structure replaced one of the rooms of the upper level, which was demolished. The connection of the two levels of the house was achieved by adding a new light staircase.

## Assessment of the results

Use of traditional materials in the preservation process – with very small energy demands for their preparation.

Reuse of the authentic materials to the greatest possible extent. Reduce the demand of new materials and the energy for their preparation.

Maintain the passive environmental strategies incorporated in the dwelling (cross ventilation, high thermal mass of the structure etc).

Ensure natural light, ventilation and sunbathing of all rooms.

## References

Architectural Workshop Agisilaou & Kalavas



Fig.8: The interior of the house after restoration. © Agisilaou & Kalavas

## Images and drawings

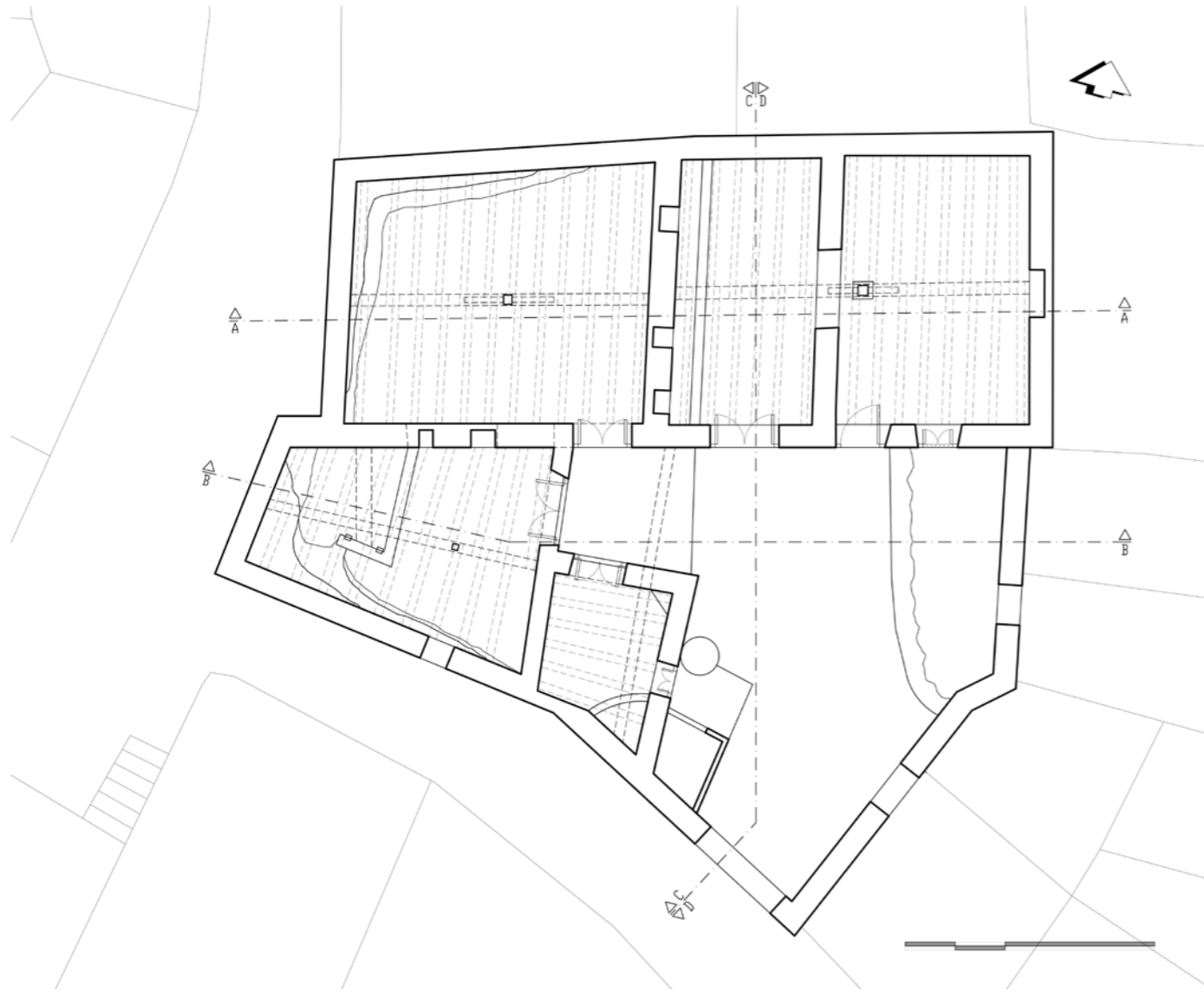


Fig.9: Lower level plan - pre-existing situation. © Agisilaou & Kalavas

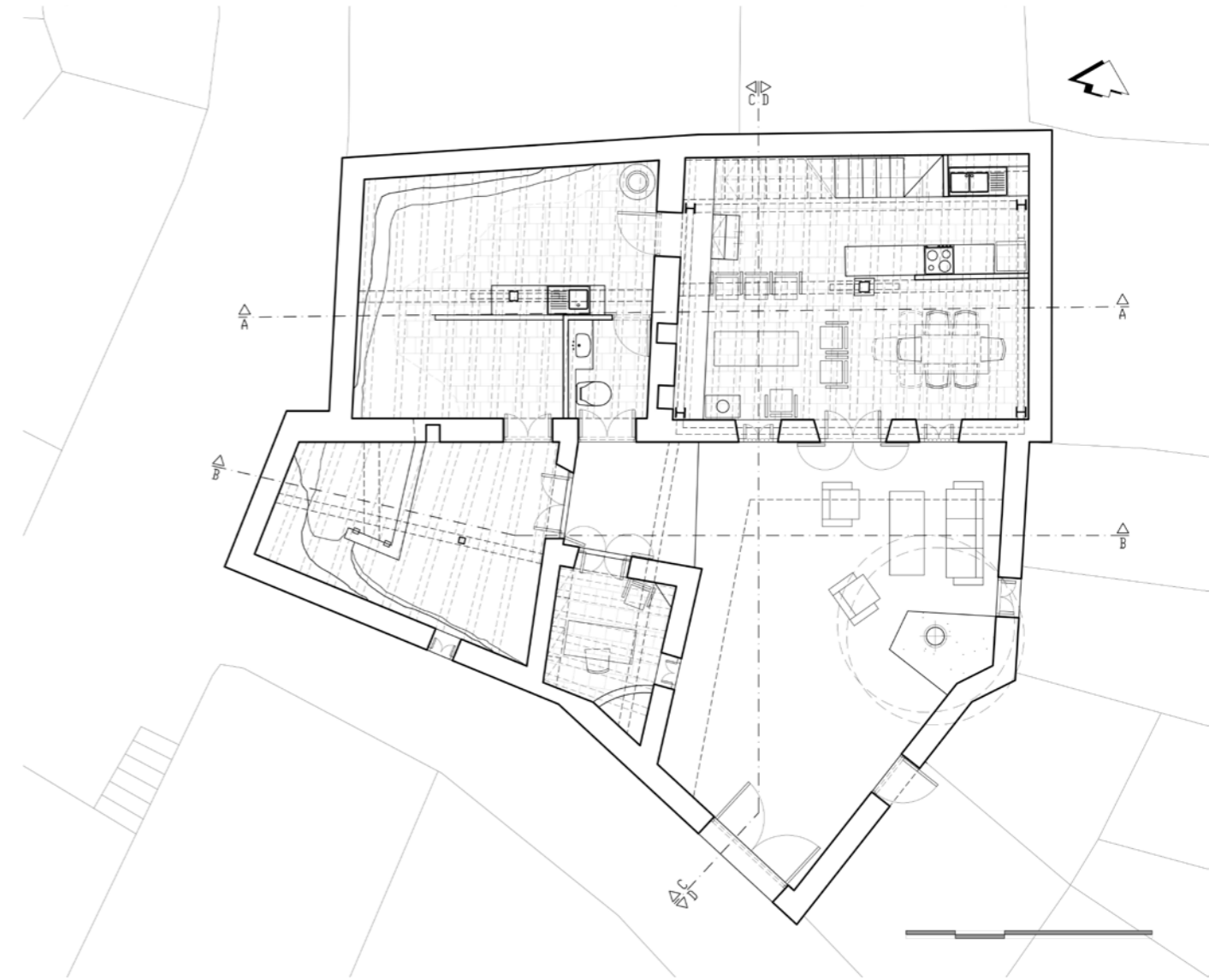


Fig.10: Lower level plan - proposal. © Agisilaou & Kalavas

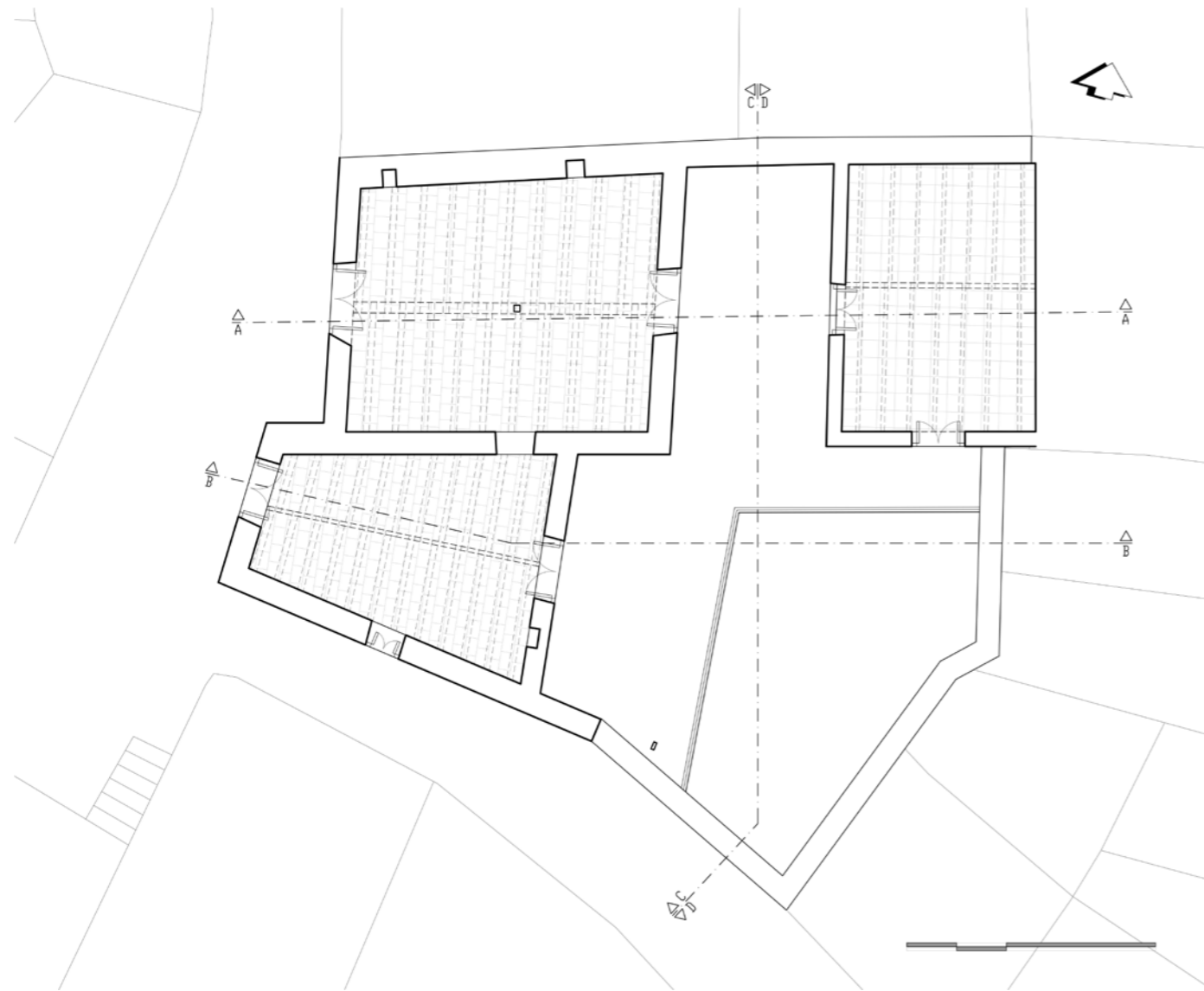


Fig.11: Upper level plan - pre-existing situation. © Agisilaou & Kalavas

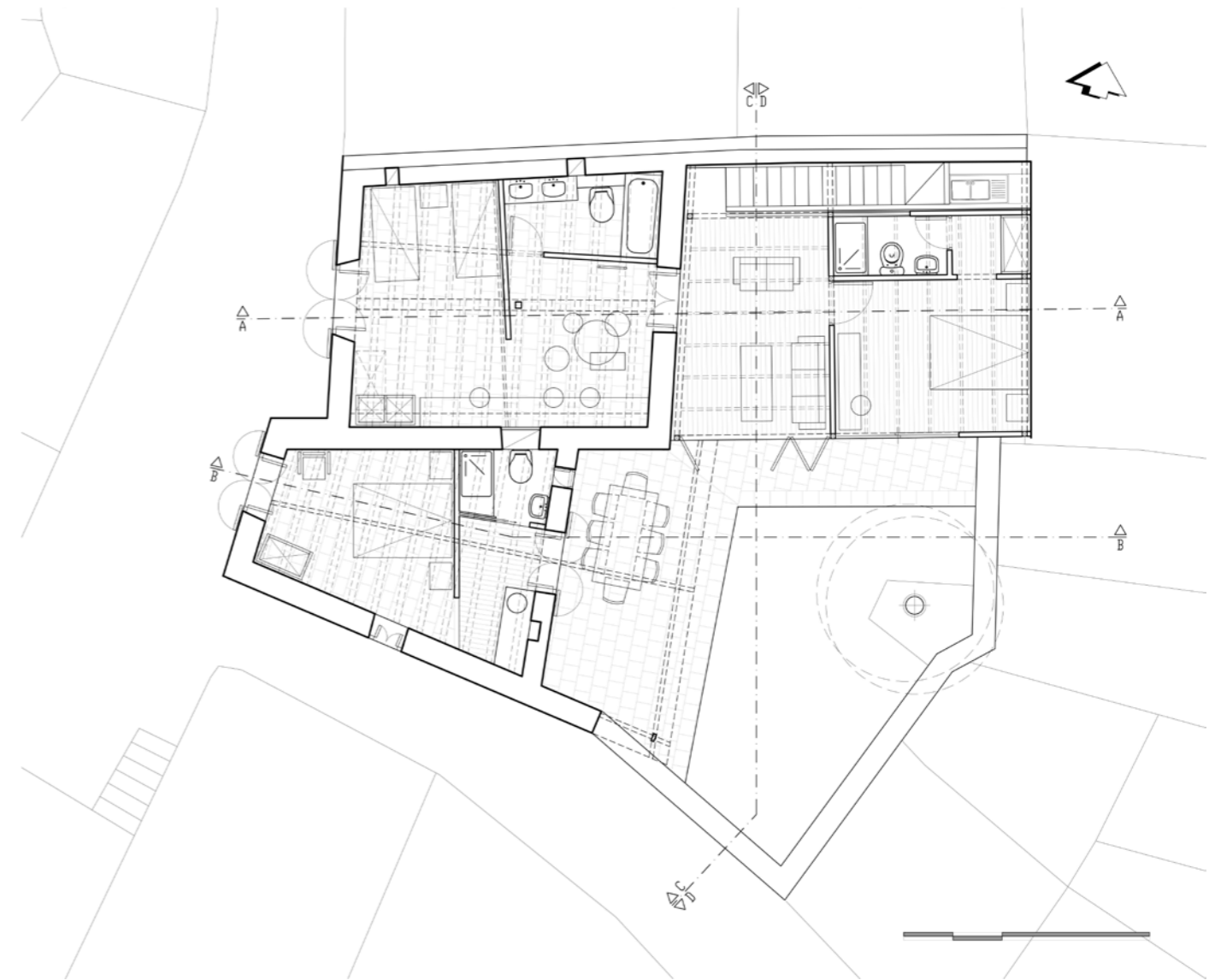


Fig.12: Upper level plan - proposal. © Agisilaou & Kalavas

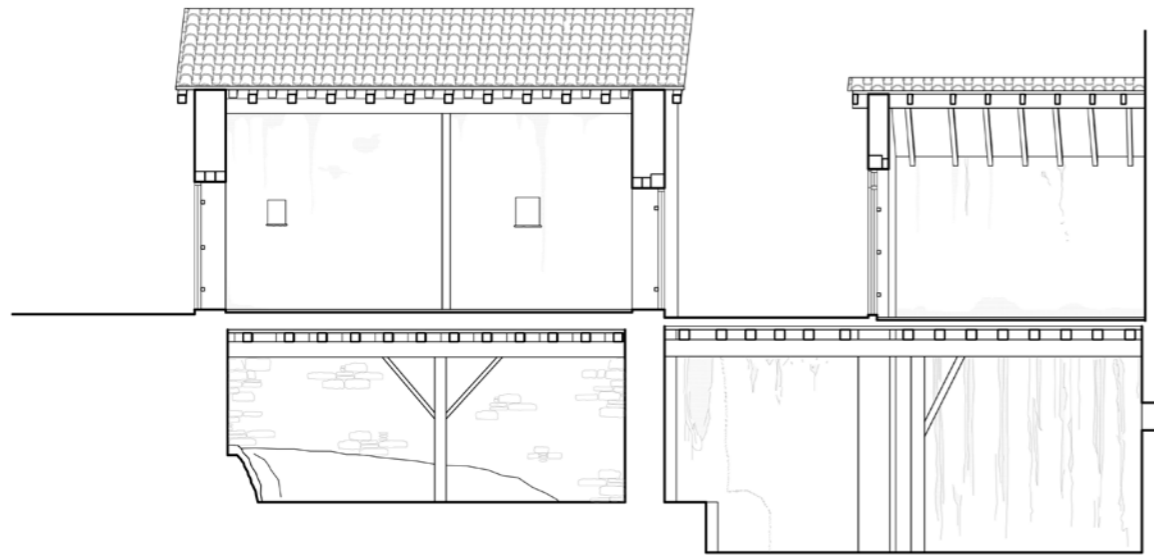


Fig.13: Section A-A - pre-existing situation. © Agisilaou & Kalavas

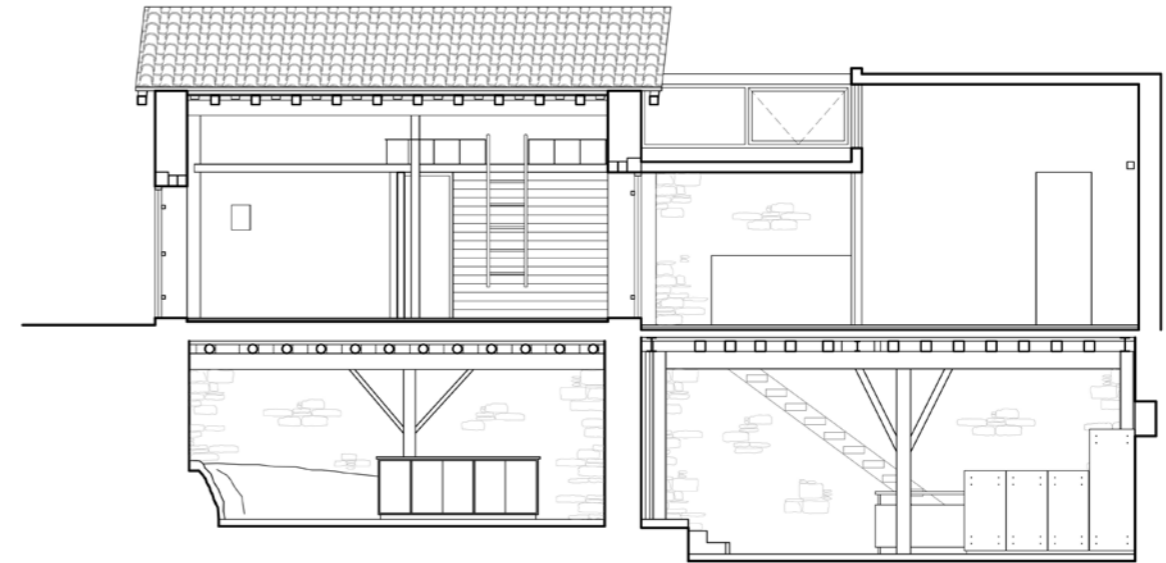


Fig.14: Section A-A - proposal. © Agisilaou & Kalavas

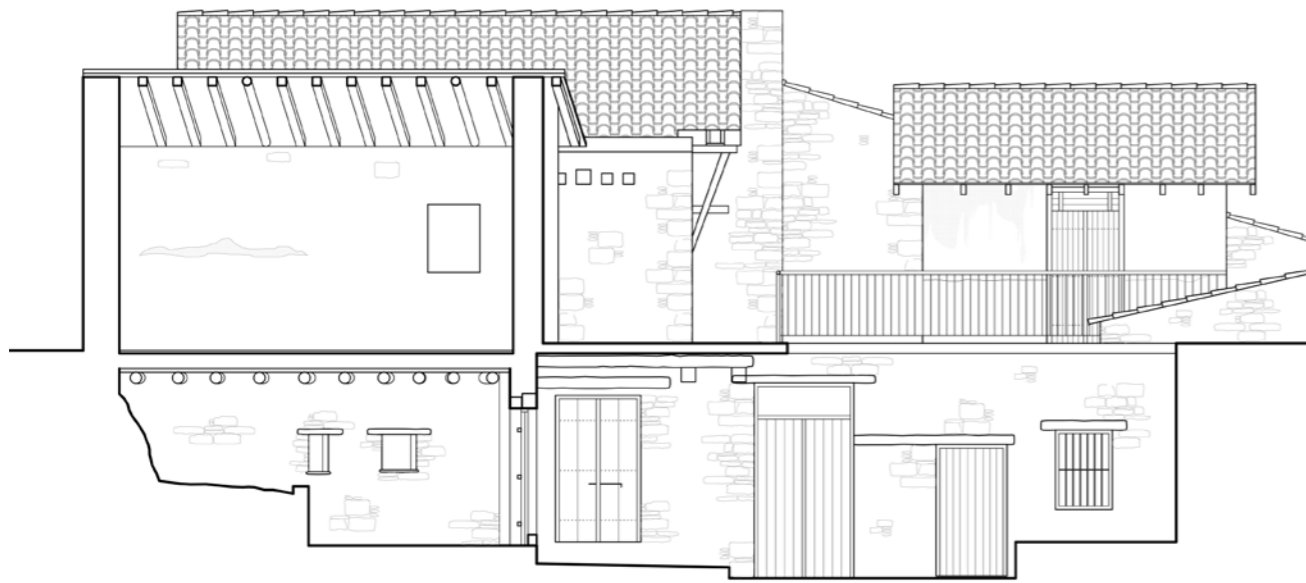


Fig.15: Section B-B - pre-existing situation. © Agisilaou & Kalavas



Fig.16: Section B-B - proposal. © Agisilaou & Kalavas



Fig.17: Section C-C - pre-existing situation. © Agisilaou & Kalavas



Fig.18: Section C-C - proposal. © Agisilaou & Kalavas

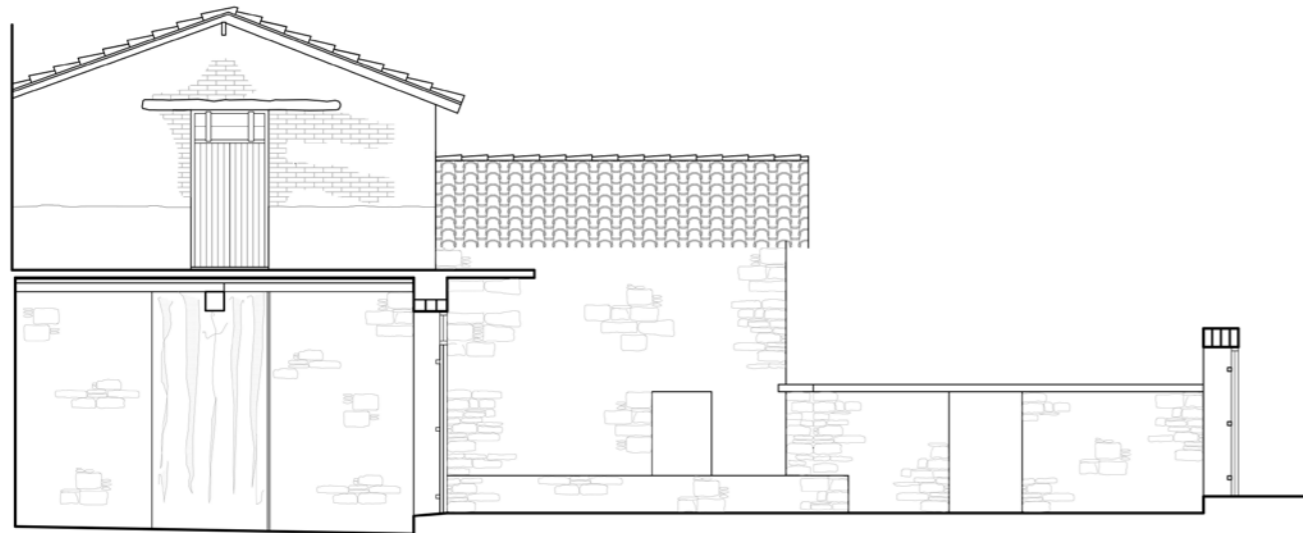


Fig.19: Section D-D - pre-existing situation. © Agisilaou & Kalavas

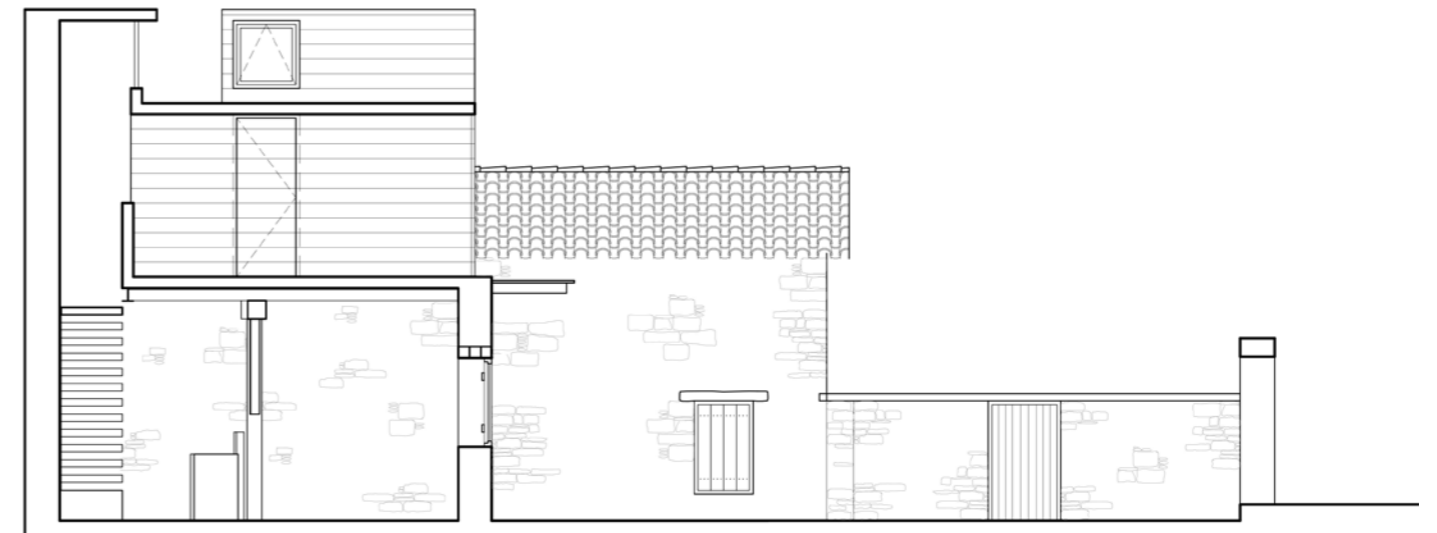


Fig.20: Section D-D - proposal. © Agisilaou & Kalavas





Fig.21: View from the street. © Agisilaou & Kalavas



Fig.22: View of the house and the inner courtyard from the south. © Agisilaou & Kalavas

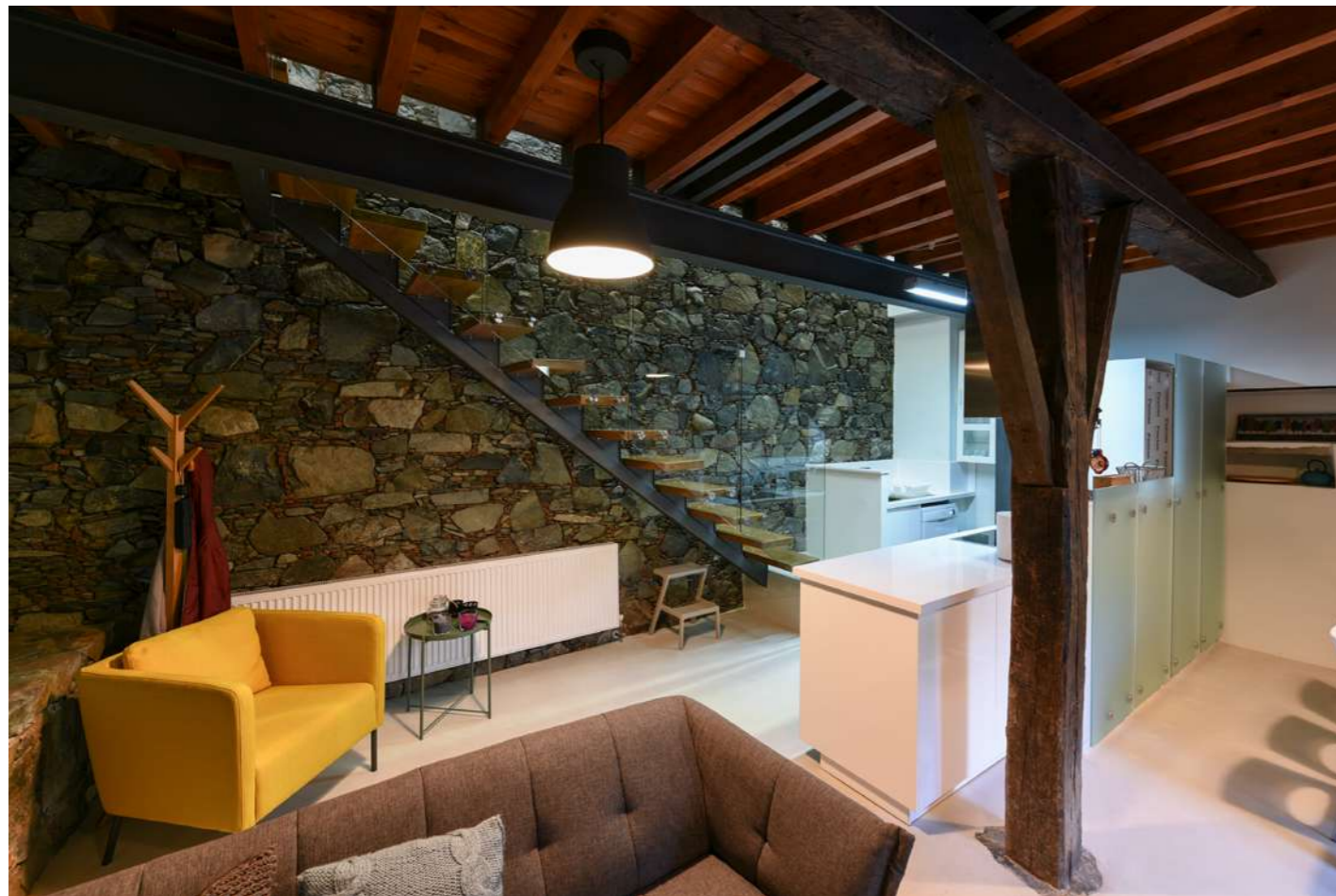


Fig.23: The dichoro space in the lower level, which houses the main living areas (living room, dining room, kitchen). In the background the staircase for the vertical internal connection of the spaces.  
© Agisilaou & Kalavas



Fig.24: The intermediate, transitional space on the upper level. © Agisilaou & Kalavas

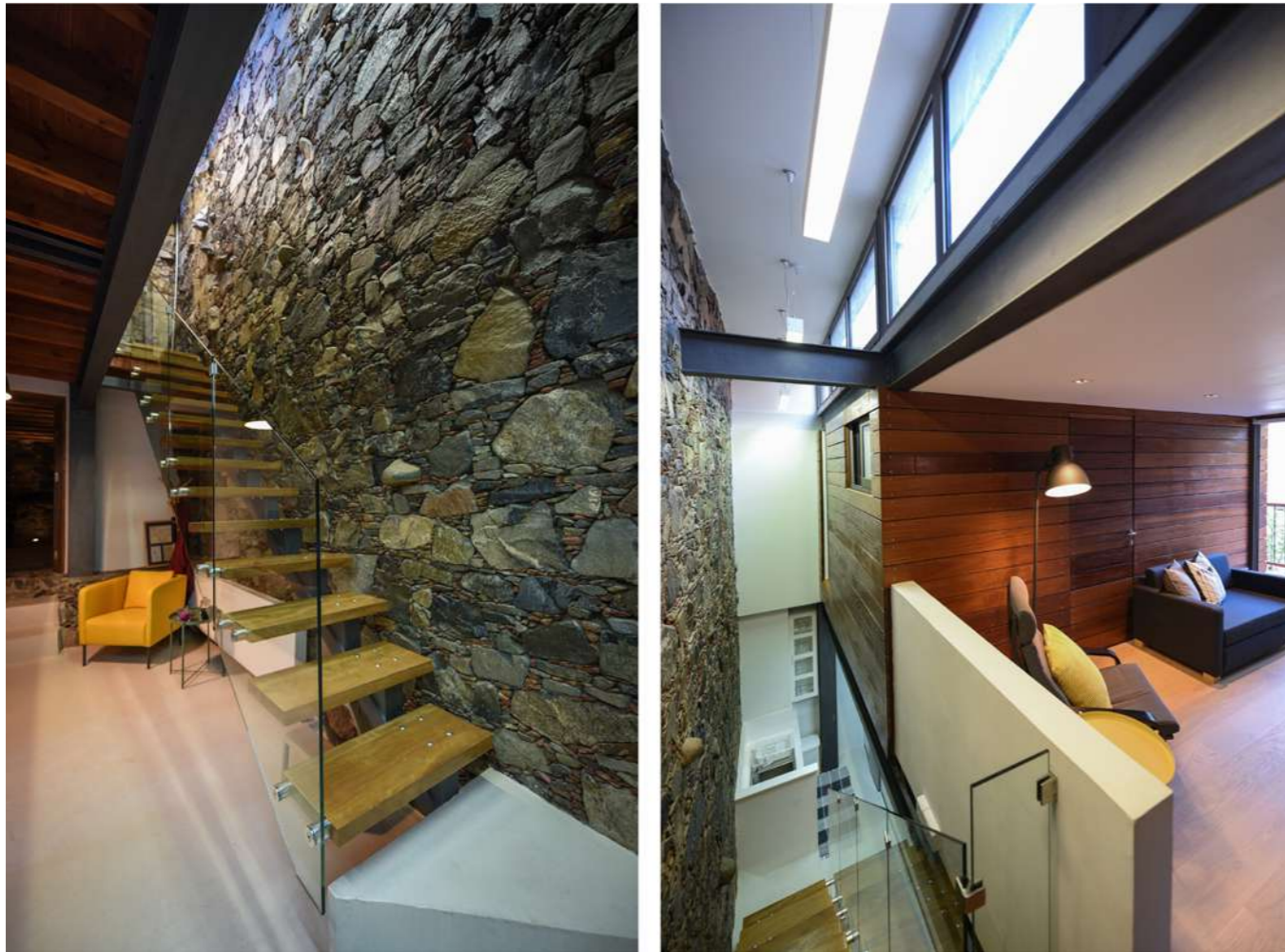


Fig.25-26: The staircase for the vertical internal connection. © Agisilaou & Kalavas



Fig.25-26: The dichoro space with the built-in construction, with a sleeping area on the roof of the bathroom.  
© Agisilaou & Kalavas